

BERRY

MATERIAL HANDLING

www.berrymaterial.com

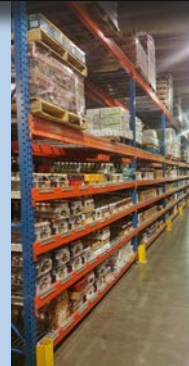
The LIFTER

Fall/Winter 2017

Yale robotic lift trucks



Pgs 1-3



SK2000
CLOSED TUBULAR RACK

Pgs 7-8



Are your lifts
prepared for winter?



Pgs 9-10

Need a lift?



New and Used Inventory Pgs 4-6

WICHITA, KS
3769 McCormick
(316) 945-0101
(800) 333-6576

TOPEKA, KS
1300 NW US 24 HWY
(785) 228-2225
(800) 864-7980

SALINA, KS
3037 S Centennial Rd
(785) 825-5151
(888) 399-3983

GARDEN CITY, KS
3830 W Jones
(620) 277-2290
(800) 475-2290

Transform into an efficiency machine with robotic lift trucks.

You experience the pain every day, increasing demand and the desire for faster delivery times. As these issues continue to escalate, you feel the need to increase your labor force to maintain peak efficiency. This can result in significantly greater overhead, chipping away at your bottom line.

What if you could automate repetitive picking tasks and free up workers to take on more valuable roles?

Yale® lift trucks Driven by Balyo can help you get there. When equipped with Driven by Balyo technology, Yale lift trucks are transformed into robotic solutions, allowing you to

- Reduce operating costs
- Increase operational efficiency
- Minimize damaged goods and accidents



Yale® 

DRIVEN
BY BALYO

How does it work?

It's simple. With Driven by Balyo technology the Yale® MPE080-VG end rider, MO70T tow tractor and MC10-15 counterbalanced stacker become robotic lift trucks, with smooth movement and controlled acceleration and speed. Relying on structural features such as walls, building columns or racks, the Driven by Balyo technology self-locates and navigates loads throughout your operation with ease, optimizing workflow.

Whether you want to manage a single truck or an entire fleet, the Balyo architecture has the flexibility to meet your operational demands, as well as the ability to interface with a range of operating systems providing greater visibility to load movement for increased accuracy.

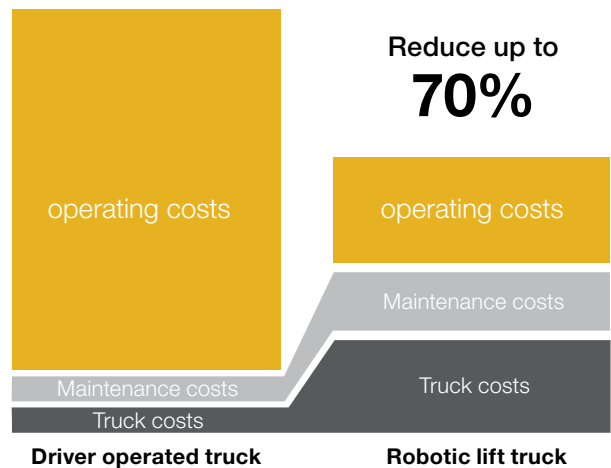


Realize the benefits.

While logistics tasks will always be directed by people, robotic lift trucks can perform repetitive, low value added tasks. Utilizing vertical or horizontal placement, robotic lift trucks can pick up, transport and drop off pallets independently and reliably, improving your bottom line.

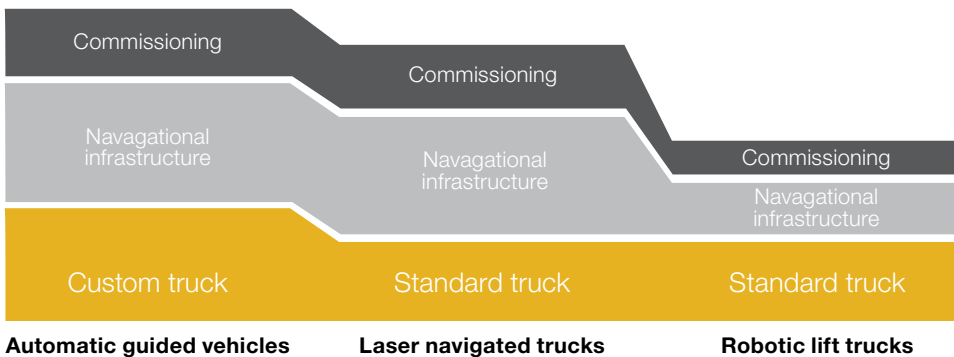
Reduce operating costs up to 70%

Not only can robotic lift trucks help lower operating costs by improving labor productivity and reducing product damages and accidents, but will enhance the flow of your materials handling operation, ultimately increasing customer satisfaction.



Improve your cost structure

When compared to automatic guided vehicles and laser navigated trucks, robotic lift trucks just make sense. You not only start off with a standard truck, which costs less, but navigational infrastructure and commissioning/start-up costs are much lower. See for yourself.



DRIVEN
BY BALLYO



NEW EQUIPMENT



EQ# 1143381

YALE 2017 GLP040SVX,
4000# CAPACITY, SIDE-SHIFT, FFL 3 STAGE MAST 84"/187", B/U ALARM, LP



SEVERAL AVAILABLE

YALE 2016 MPB045VG,
4510# CAPACITY PALLET JACK, 24-VOLT ELECTRIC



EQ# 1138952

YALE 2017 GLP050VX,
5000# CAPACITY, SIDE-SHIFT, FFL 3 STAGE MAST 86"/194", B/U ALARM, LP



EQ# 1135367

UTILEV 2016 UT30P,
6000# CAPACITY, SIDE-SHIFT, FFL 3 STAGE MAST 89"/188", B/U ALARM, LP



EQ# 1152598

YALE 2017 GLP050MX,
5000# CAPACITY, SIDE-SHIFT, FFL 3 STAGE MAST 86"/194", B/U ALARM, LP



EQ# 1152527

YALE 2017 GLP050MX,
5000# CAPACITY, SIDE-SHIFT, FFL 3 STAGE MAST 86"/194", B/U ALARM, LP



EQ# 1150973

YALE 2017 GLP050MX,
5000# CAPACITY, SIDE-SHIFT, FFL 3 STAGE MAST 86"/194", B/U ALARM, LP



EQ# 1151341

YALE 2017 GLP060MX,
6000# CAPACITY, SIDE-SHIFT, FFL 3 STAGE MAST 87"/181", B/U ALARM, LP



EQ# 1152050

YALE 2017 GLP050MX,
5000# CAPACITY, SIDE-SHIFT, FFL 3 STAGE MAST 86"/194", B/U ALARM, LP



EQ# 1151340

YALE 2017 GLP050MX,
5000# CAPACITY, SIDE-SHIFT, FFL 3 STAGE MAST 86"/194", B/U ALARM, LP

There's still time to take advantage of the **Section 179 tax deduction**

Businesses may deduct the full price of qualifying equipment purchased in 2017, up to a \$500,000 cap. Equipment must be purchased/financed and put in service by December 31, 2017. Purchases may also qualify for bonus depreciation [new equipment only].

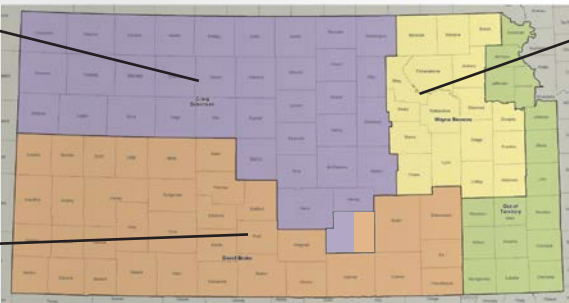
*The above is a simplified discussion of the Section 179 deduction and is not to be considered legal, tax, or financial advice. Consult with your tax, legal, or financial advisor for recommendations related to your particular circumstances.

Contact your
BERRY
MATERIAL HANDLING

Sales Representative

Craig Simonsen
(316) 393-5277

David Brake
(316) 655-8476



Wayne Stevens
316-655-6200



USED EQUIPMENT

USED EQUIPMENT



EQ# 1103845

HYSTER 2006 H50FT,
5000# CAPACITY,
SIDE-SHIFT, FFL 3 STAGE
MAST 83"/189",
B/U ALARM, LP
3525 HRS



EQ# 1124525

YALE 2005 GLP050RG,
5000# CAPACITY,
SIDE-SHIFT, FFL 3 STAGE
MAST 90"/200",
B/U ALARM, LP
5123 HRS



EQ# 1118378

YALE 2005 GLP050RG,
5000# CAPACITY,
SIDE-SHIFT, FFL 3 STAGE
MAST 90"/200",
B/U ALARM, LP
5261 HRS



EQ# 1117246

YALE 2005 GLP050RG,
5000# CAPACITY,
SIDE-SHIFT, FFL 3 STAGE
MAST 90"/200",
B/U ALARM, LP
5915 HRS



EQ# 1144051

YALE 2006 GLP050VX,
5000# CAPACITY,
SIDE-SHIFT, FFL 3 STAGE
MAST 90"/200",
B/U ALARM, LP
4636 HRS



EQ# 1149997

YALE 2009 GLC050VX,
5000# CAPACITY,
SIDE-SHIFT, FFL 3 STAGE
MAST 83"/189",
B/U ALARM, LP
5661 HRS



EQ# 1144050

YALE 2006 GLP050VX,
5000# CAPACITY,
SIDE-SHIFT, FFL 3 STAGE
MAST 90"/200",
B/U ALARM, LP
3904 HRS



EQ# 1149995

YALE 2009 GLC050VX,
5000# CAPACITY,
SIDE-SHIFT, FFL 3 STAGE
MAST 83"/189",
B/U ALARM, LP
5604 HRS



EQ# 1143438

YALE 2012 GLC040SVX,
4000# CAPACITY,
SIDE-SHIFT, FFL 3 STAGE
MAST 82"/187",
B/U ALARM, LP
4928 HRS



EQ# 1143437

YALE 2012 GLC040SVX,
4000# CAPACITY,
SIDE-SHIFT, FFL 3 STAGE
MAST 82"/187",
B/U ALARM, LP
4041 HRS



EQ# 1143440

YALE 2012 GLC040SVX,
4000# CAPACITY, FOUR
FUNCTION, FFL 3 STAGE
MAST 82"/187",
B/U ALARM, LP
6501 HRS



EQ# 1054876

YALE 2012 ERC040, 4000#
CAPACITY, SIDE-SHIFT,
3 STAGE MAST 94"/216",
36V ELECTRIC
4977 HRS



EQ# 1141220

NISSAN 1996
KPH02A25PV, 5000#
CAPACITY, FFL 3 STAGE
MAST 83"/188",
B/U ALARM, LP
7838 HRS



EQ# 1150329

YALE 2015 MSW040,
4000# CAPACITY,
SIDE-SHIFT, SINGLE STAGE
MAST 87"/130", 24 VOLT
ELECTRIC
2496 HRS



EQ# 1087082

TCB 1998 930 ROUGH TER-
RAIN, 6000# CAPACITY,
72" CARRIAGE, SIDE-SHIFT,
3 STAGE MAST, 131"/262",
DIESEL
3292 HRS



EQ# 623377

YALE 1998 MCW040
WALKIE STACKER, 4000#
CAPACITY, 3 STAGE MAST
83"/186",
24 VOLT ELECTRIC
2259 HRS



EQ# 1148097

YALE 2013 GLP060VX,
6000# CAPACITY,
SIDE-SHIFT, FFL 3 STAGE
MAST 91"/187",
B/U ALARM, LP
1869 HRS



EQ# 1148101

YALE 2013 GLP060VX,
6000# CAPACITY,
SIDE-SHIFT, FFL 3 STAGE
MAST 91"/187",
B/U ALARM, LP
3104 HRS



EQ# 1140898

HYSTER 2013 S35FT,
3500# CAPACITY, FORK
POSITIONER, FFL 3 STAGE
MAST 82"/187",
B/U ALARM, LP
6326 HRS



EQ# 1140895

HYSTER 2013 S35FT,
3500# CAPACITY, FORK
POSITIONER, FFL 3 STAGE
MAST 82"/187",
B/U ALARM, LP
5643 HRS



EQ# 1140045

HYSTER 2005 H50MX,
5000# CAPACITY,
FFL 3 STAGE MAST
84"/189", B/U ALARM, LP
6761 HRS



EQ# 1138155

YALE 2006 GLP060VX,
6000# CAPACITY,
SIDE-SHIFT, FFL 3 STAGE
MAST 93"/199",
B/U ALARM, LP
4296 HRS



EQ# 1144375

CAT 2005 GC40KS-STR,
8000# CAPACITY,
SIDE-SHIFT, FFL 3 STAGE
MAST 85"/183",
B/U ALARM, LP
12097 HRS



EQ# 1144374

CAT 2004 GC45KS,
9000# CAPACITY,
SIDE-SHIFT, FFL 3 STAGE
MAST 98"/209", LP
17916 HRS

Ask about our LEASING options!

And don't forget - We RENT!

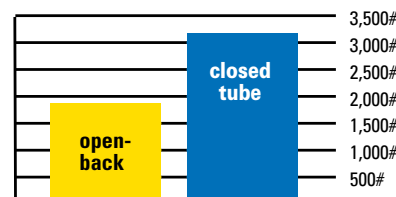
Why Choose Steel King's Closed Tubular Rack?

Roll-formed is the most popular and versatile type of racking, and Steel King's closed tube design pallet racking has become an industry standard. Columns and beams are formed from high-strength steel and are continuously welded into closed tubular sections providing not only exceptional strength but also dramatically increased durability. Any engineer will confirm the difference. Steel King provides the most versatile construction available offering beam, frame and component options and multiple colors.

With its extraordinary strength and versatility, Steel King's Closed Tubular Rack is a solid solution to any storage challenge.

Closed tube design

gives it **250% more frontal impact strength and 68% greater side impact resistance** than an open back column, greatly enhancing product safety in your facility. Reduced damage = reduced maintenance cost and longer life.



Force applied in pounds to reach yield (failure) of column



Powder coat paint finish

is not only visually appealing but is:

- 1500% more durable against impact damage
- 150% more resistant to chemicals
- 94% more resistant to chips and scratches over liquid coating

Frame columns are available in multiple sizes and thicknesses

offering a wide variety of load-carrying capacities to match your need or application.



Unique 90-degree bend

and no corner holes create added strength over competitor racks.



Strong tubular bracing

is secured with full fillet weld offering **4 times more weld than competitor racks.**

Standard footpads

Steel King's flush-to-column-base footpad design evenly disperses weight load. The multiple offset anchor holes allow greater flexibility for anchor placement.

Beams are available in many profiles and lengths

offering more load capacity and configuration options.



Heavy-duty footpads

welded directly to uprights with multiple offset anchor holes allow for flexibility in anchor placement.



Column Core protection

takes durability to the next level. Factory-installed column cores help protect your most vulnerable areas.



The Column Core reinforcement shown is powder coated yellow for added emphasis and detail.

This optional feature makes SK2000 even stronger than standard structural channel rack.

Options



Snap Guard

is an adjustable column protector for boltless rack, constructed of formed angle and welded top cap.

Distinguishing Features

SK2000 BOLTLESS



Exclusive auto-engaging safety lock feature

prevents accidental beam disengagement from minor nudges.

Tear drop design

makes it easy to install (no tools required), saving costs on time and labor.

Three-rivet beam connection

makes it **26% stronger** than a standard two-rivet connection, providing better product protection. Four-rivet beam connection on 5.5" and 6" beams.

BERRY

MATERIAL HANDLING

For pricing and availability please call our supplies team

Wichita: 316-945-0101

Topeka: 785-228-2225



Winter is on its way.

Is your fleet prepared?

Frigid temperatures and slick working surfaces can pose a variety of problems for the forklifts your business depends on. Here are a few things to consider as we head in to the winter months:

SCHEDULE AN INSPECTION

If you’ve been putting off that preventative maintenance service, now is the time to get it scheduled.

Cold weather can be especially hard on batteries, fluids, and engines. A quick inspection now can save you a costly repair bill later. Call our service team to schedule a winterizing service.

PROTECT AGAINST HAZARDS IN THE WORKSPACE

Do you run LP trucks in a closed warehouse? When facility doors close against the cold, carbon monoxide levels rise. Help ensure your team’s safety by scheduling a carbon monoxide emissions test. Our technicians will evaluate the emissions of your units and make adjustments and recommendations as necessary.

Make sure to grit surfaces that are prone to slippery conditions.

Check the condition of your forklift’s tires before each shift. Tires should be inspected for cuts, chunking, cracks, separation, embedded objects, and wear. If tires are worn to the displayed name or size - it’s time for replacements! Wear can impact everything from traction to shock absorption to capacity. Translation? Safety hazard.

WICHITA
316-945-0101

TOPEKA
785-228-2225

SALINA
785-825-5151

BERRY
MATERIAL HANDLING



Don’t wait to replace those worn out tires!

We stocked up so you can save.
Ask our parts department about **CONTAINER PRICING** on all stocked Orca tires.

Offer good while supplies last!



MID-RANGE MATERIALS HANDLING PRESS-ON SOLID

ORCA

Balanced Performance

Orca is designed with one objective: performance at a competitive price.

This full-size tire is intended for use in industrial applications on internal combustion forklifts. This long-performing tire is the most cost-effective option in its class.

Orca Press-On tires are available in core sizes. Compounds include Standard Black and Non-Marking Gray.



PERFORMANCE DEFINED

ENERGY SAVING

Trelleborg is a **leading approved tire manufacturer to the OEMs**. We work closely with them to ensure we meet the requirements of energy consumption. This results in **reduced fuel costs** for our customers.

ENDURANCE

Our tires are built to deliver the **best heat resistance performance** in their class. We invest in **compounding technology and quality raw materials** to ensure exceptional heat resistance. Combined, these allow our tires to cope safely with heat build-up longer.

TIRE LIFE

Trelleborg products guarantee **best in class** performance. This results in longer tire life, **additional hours of usage**, reduced downtime and lower maintenance costs.

TIRE WEAR

Our expertise in design ensures that our tires are **built to last** in demanding environments. Our tires are designed to match the requirements of the global leading OEM producers delivering a wear **performance that exceeds** all others in their class.

BERRY

MATERIAL HANDLING

3769 McCormick, Wichita, KS 67213
RETURN SERVICE REQUESTED

PRSRRT STD
U.S. POSTAGE PAID
WICHITA, KS
PERMIT NO 628



Would you like to update your mailing preferences?
E-mail marketing@berrymaterial.com

Electric Pallet Jacks Restocked!

- 4500lb capacity
- Yale Smart Lift™ - raise and move loads simultaneously
- Largest handle run zone
- Reinforced components for durability
- Enhanced maneuverability for tight spaces

Yale®
Authorized Dealer 

*Ask our sales team about
year-end pricing*

